



**WULGURU TECHNICAL
SERVICES**

CAPABILITY STATEMENT 2024



Environmental Management and Compliance

Wulguru Technical Services provide substantial experience in heavy industry compliance. Our staff have significant experience in maintaining environmental compliance for a range of industries, ensuring you have a clear understanding of your obligations and requirements.

We provide simple, clear advice to our clients on best practice environmental management techniques and processes, resulting in a cost effective means of managing your site.

Our staff continue to engage with industry through events, seminars and professional development activities ensuring that we maintain a contemporary understanding of key environmental compliance matters and regulatory policies.

We'd love to chat about how we can assist your projects, contact us at info@wulgurutechservices.com.au or +61 437 799 193.

What we do:

- Environmental Incident Investigation
- Environmental Risk Assessments
- Third Party Audits
- Environmental Advisor Secondment
- Environmental Management Plans
- Receiving Environment Monitoring Programs



**WULGURU TECHNICAL
SERVICES**



Approvals and Impact Assessment

Wulguru Technical Services assist and support clients through approvals processes regardless of size and scale. From local government through state and federal jurisdictions, we bring together the necessary elements to ensure your approval is given the best chance of success.

Our staff are highly skilled at impact assessment, from green fields projects to brown fields and incident investigation, we can support you with your requirements.

All staff have industry experience and understand the importance of prioritising environmental risks, meaning that we speak your language and have a clear understanding of expectations from the regulator.

We'd love to chat about how we can assist your projects, contact us at info@wulgurutechservices.com.au or +61 437 799 193.

What we do:

- Applications for Environmental Authorities
- Progressive Rehabilitation and Closure Plans
- Estimated Rehabilitation Cost Assessment
- Environmental Impact Assessments
- Environmental Risk Assessments
- Receiving Environment Monitoring Programs



**WULGURU TECHNICAL
SERVICES**



Soil Survey and Investigation

Wulguru Technical Services provide a range of soil and landscape investigation capabilities with years of experience delivering on local through to mega projects.

We are one of the few firms experienced and able to investigate and assess against the requirements for Strategic Cropping Land with a strong track record on submissions.

We provide baseline assessment of landscapes via soil survey and suitability assessment to ensure you have a clear understanding of available materials for rehabilitation.

We also maintain staff with contaminated land experience, acting as Suitably Qualified Persons in conjunction with Contaminated Land Auditors.

We'd love to chat about how we can assist your projects, contact us at info@wulgurutechservices.com.au or +61 437 799 193.

What we do:

- Strategic Cropping Land Investigations (including Regional Interest Development Approvals)
- Soil Survey and Land Suitability Assessments
- Contaminated Land Assessments
- Erosion and Sediment Control Plans



**WULGURU TECHNICAL
SERVICES**



Spatial Science and Geographic Information Systems

Wulguru Technical Services are passionate about the use of spatial sciences, Geographic Information Systems (GIS) and technology. We provide a range of services which deliver clearer insights into your operation, facilitating time critical decisions.

We provide remote sensing capabilities which save time and assist as support tools to onground personnel, providing a smooth data collection process.

We also provide a range of "Report Ready" mapping products capable of being incorporated into your devices and utilised offline or included in critical reports and submissions.

We'd love to chat about how we can assist your projects, contact us at info@wulgurutechservices.com.au or +61 437 799 193.

What we do:

- Preparation of "Report Ready" Mapping Products
- Remote Sensing and Modelling
- GIS Database Management
- 3D mapping and modelling
- Multispectral and LiDAR data collection
- Collection and Preparation of Satellite and Remotely Piloted Aircraft System (RPAS) Imagery



**WULGURU TECHNICAL
SERVICES**



Environmental Monitoring and Sampling

Wulguru Technical Services staff are highly experienced in the monitoring and sampling of a range of environmental values. All staff are trained to collect samples in accordance with the latest version of the Department of Environment and Science Monitoring and Sampling Manual, and in the use of a range of sampling techniques.

Our staff are well versed in field activities and experienced in remote work, ensuring a safe and efficient monitoring and sampling program.

We provide support to our clients for one off events, short programs or long term environmental monitoring and database maintenance, meaning you can be confident that your data is in safe hands.

We'd love to chat about how we can assist your projects, contact us at info@wulgurutechservices.com.au or +61 437 799 193.

What we do:

- Groundwater monitoring e.g. low flow, hydrasleeve, etc.
- Surface water monitoring
- Air quality monitoring
- Receiving Environment Monitoring e.g. macroinvertebrates and ecotoxicology



**WULGURU TECHNICAL
SERVICES**



Ecology

Wulguru Technical Services Ecology team bring technical experience and practical focus to baseline assessments, pre-clearance inspections, and threatened species and targeted searches.

Our staff have practical knowledge of revegetation, rehabilitation, and pest and weed management, ensuring a successful rehabilitation outcome for your site.

We provide support to major projects, seasonal assessments and targeted species searches, providing clarity and direction on approvals and compliance pathways.

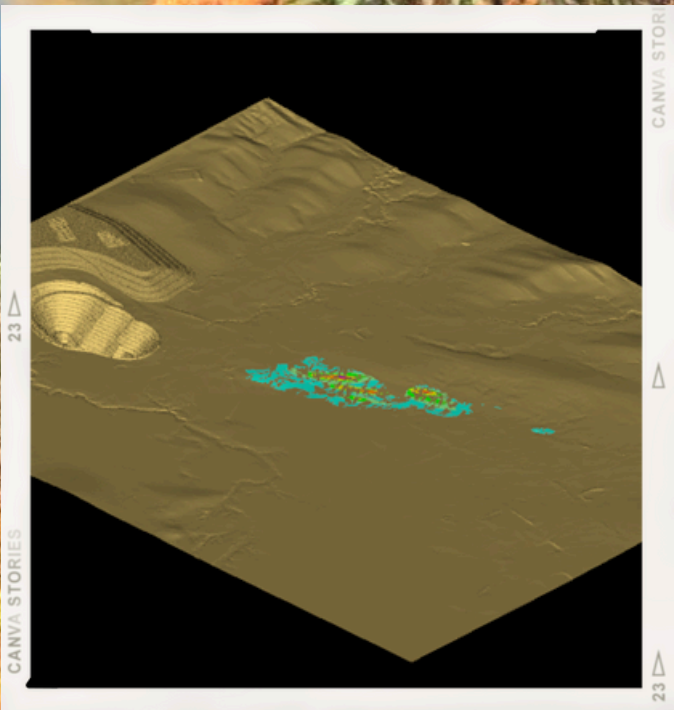
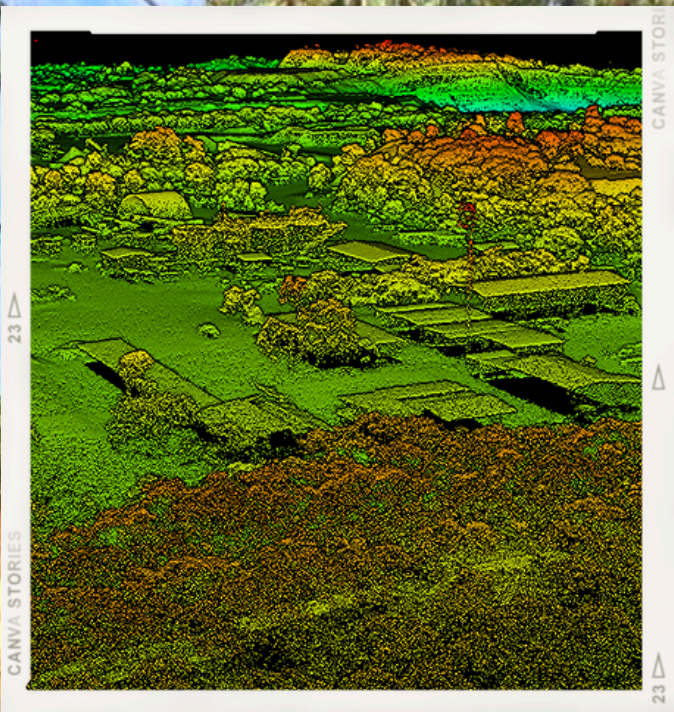
We'd love to chat about how we can assist your projects, contact us at info@wulgurutechservices.com.au or +61 437 799 193.

What we do:

- Threatened Species Searches
- Baseline Flora Studies (e.g. Regional Ecosystems, PMAV, etc.)
- Baseline Fauna Studies
- Rehabilitation Monitoring and BioCondition assessments.



**WULGURU TECHNICAL
SERVICES**



Conceptual Mine Design

Wulguru Technical Services Ecology team bring technical experience and practical focus to baseline assessments, pre-clearance inspections, and threatened species and targeted searches.

Our staff have practical knowledge of revegetation, rehabilitation, and pest and weed management, ensuring a successful rehabilitation outcome for your site.

We provide support to major projects, seasonal assessments and targeted species searches, providing clarity and direction on approvals and compliance pathways.

We'd love to chat about how we can assist your projects, contact us at info@wulgurutechservices.com.au or +61 437 799 193.

What we do:

- Threatened Species Searches
- Baseline Flora Studies (e.g. Regional Ecosystems, PMAV, etc.)
- Baseline Fauna Studies
- Rehabilitation Monitoring and BioCondition assessments.



**WULGURU TECHNICAL
SERVICES**